

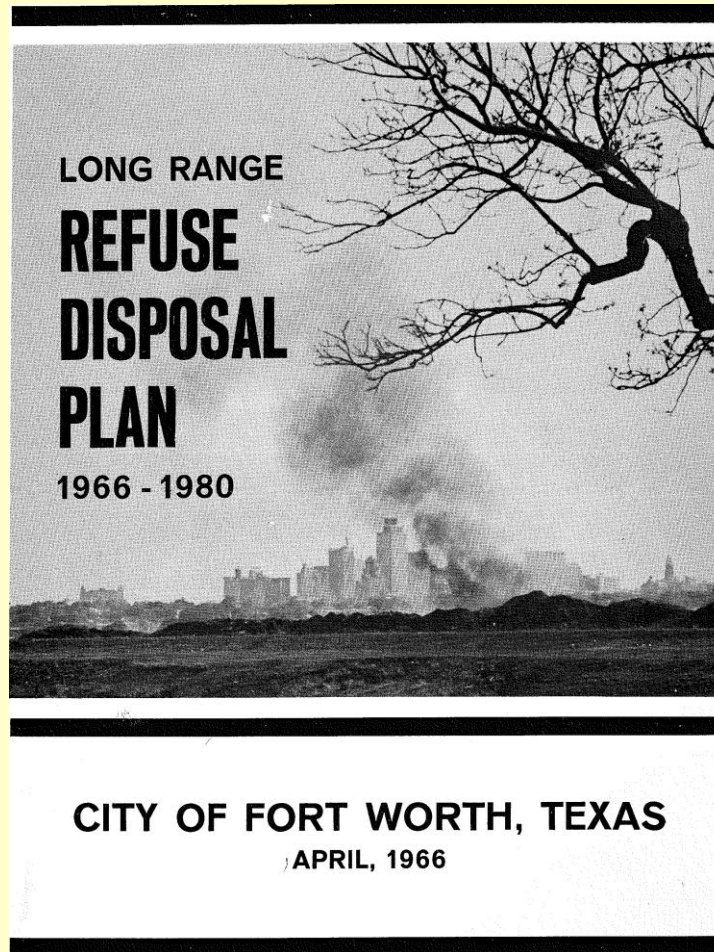
Impact of Difficult to Handle Wastes on Local Government – Can Product Stewardship Really Help?

Presented to
Texas Recycling & Sustainability
Summit 2008

August 18, 2008

Methods Do Change


(Thank Goodness!)



Difficult to Handle Wastes

- Electronic Wastes
 - Computers
 - Televisions
- Compact Fluorescent Light bulbs
- Fluorescent Light Tubes
- Paints/Varnishes/Stains
- Mercury Thermostats
- Herbicides
- Pesticides
- Pharmaceuticals
- Tires
- Lead Acid Batteries
- Waste Oils
 - Cooking Oil
 - Motor Oil
- Automotive Fluids
- Household Cleaning Chemicals
- Swimming Pool Chemicals
- Photo Chemicals
- Etc., etc., etc.



 Escape from everyday life.

© 2014 The Home Depot

Fort Worth's Solid Waste Drop-off Stations

Difficult to handle items accepted at our
Citizens Convenience Stations

- Tires (4 per HH in a 6 month period)
- E-waste (Computer equipment and televisions)

Hazardous waste not accepted.

Commercial waste not accepted.

Fort Worth's Environmental Collection Center

- Operated by City of Fort Worth
- 36 Participating Cities/Counties/MUDs
- Household Hazardous Waste (HHW) Collections
 - Drive thru Facility open during set hours
 - Mobile Collection Units w/ 86 events annually
- Receive and consolidate over 1,900,000 lbs annually
- Approximately 22% of material is Recycled vs. Incineration/Disposal
- Rate per HH - \$47.00

Fort Worth's Environmental Collection Center

ECC Operating Costs -

Request for FY 08-09 Budget -
\$1,005,156.00

HHW Participation Rate at ECC is –

– Fort Worth – 4.6%

– Participating Cities – approximately 7.8%

Can Product Stewardship Really Help?

- Should cities continue to shoulder the costs of specialized disposal?
- Can our cities continue to pay for this?
- Shouldn't the producers and distributors of difficult to handle materials assist with the disposal of these wastes?
 - Some already do
 - “Greening of America” will encourage others to do so
 - Most will have to be drug to the table

Can Product Stewardship Really Help?

- If producers accept this responsibility
 - Reverse logistics to collect used and unspent products
 - Products recycled by producers
 - Products will be engineered to mitigate issues of concern
 - Who is really paying?
- True product stewardship

Whose Responsibility is it?

True - It is the responsibility of all of us

However, we must understand that
Producers have a huge responsibility

Questions?